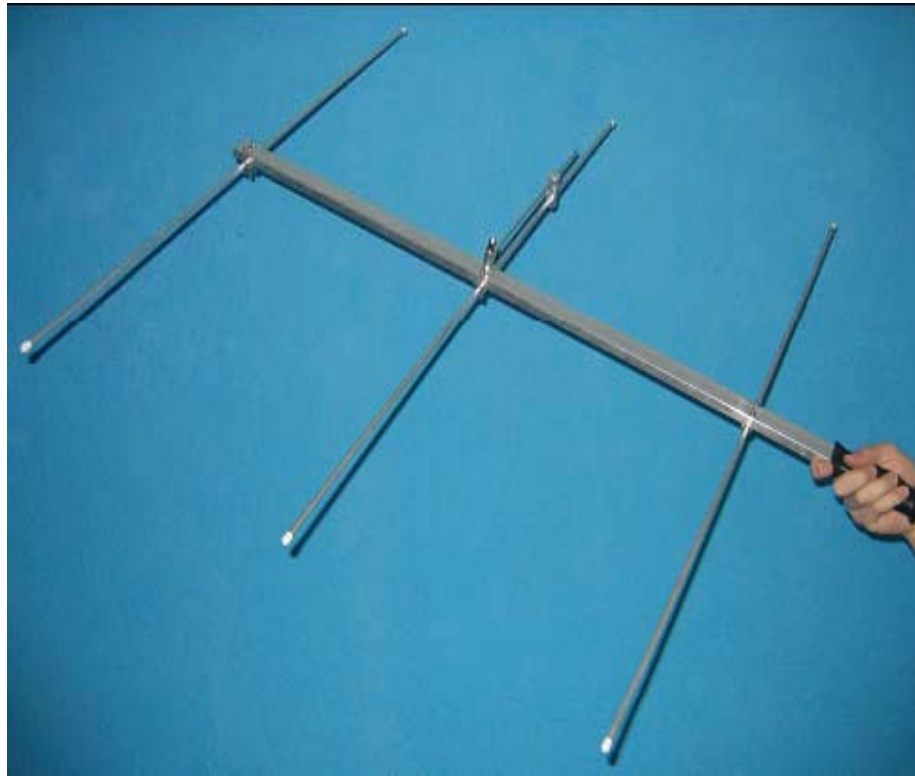


FOLDABLE 3 ELEMENT YAGI ANTENNA



Dear Customer,

Thank you for your purchase and we wish you a great success in your research.

We will detail the steps so you can assemble you new 3 element foldable Yagi antenna.

Parts of the antenna:

- a) Body of the antenna with elemments and handle

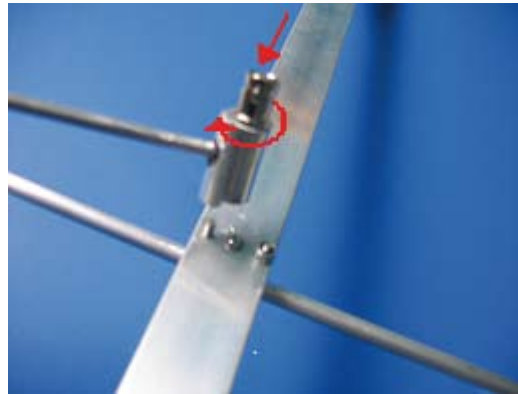
Included in a bag:

- b) 1 Coupling short (two halves of rectangular aluminum profile) with screw and nut
- c) 1 BNC jack with aluminum tube

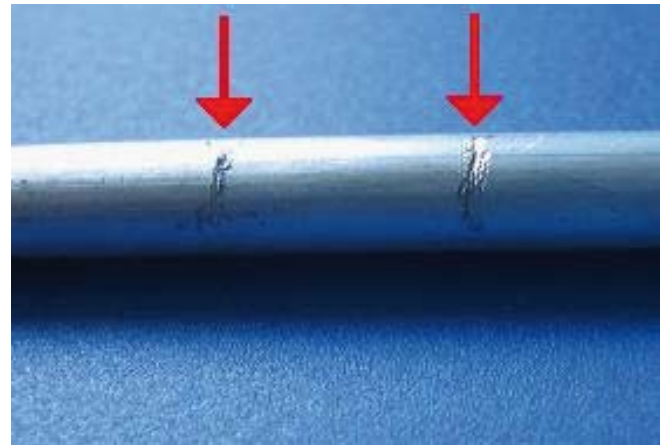


Instructions:

Take the body of the antenna (a) and notice that (on the opposite side of the butterflies and on the center) only one element does not have a nut while all the others do.
Screw the BNC jack (c) here.



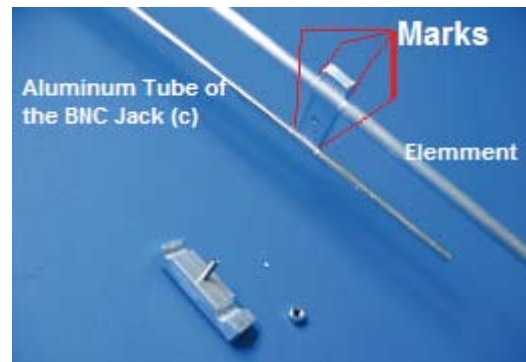
Note the two parallel marks on the tube of the BNC jack (c) and on the half element where you just screwed the BNC jack. These marks are not too obvious so look carefully and you will easily spot them. They are two parallel lines separated about half an inch.



Take the coupling short (b) and remove the nut in order to separate the two pieces.



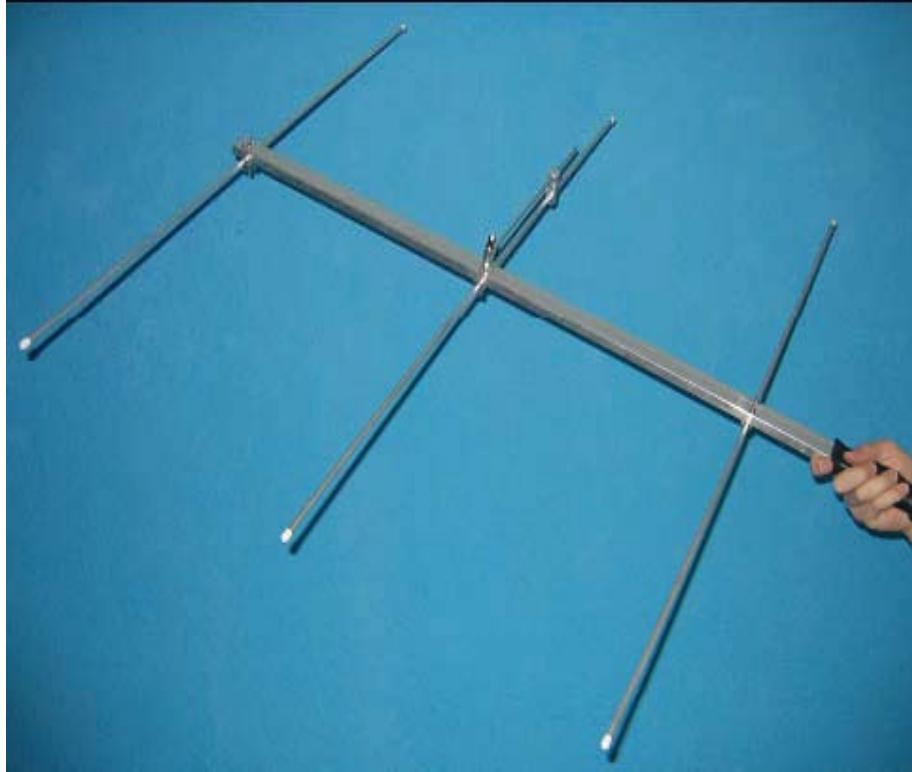
Take one of the two halves of the Coupling Short and put it behind the Half element and the Aluminum tube. The short has to be inserted between the 4 parallel marks.



Take the second half of the Coupling Short and put it in front of the first one, pass the screw and tighten the nut.



Done!! Your antenna is ready for use. You can fold and unfold the elements for transporting and tracking by tightening or untightening the butterflies. The previous instructions only need to be followed when you receive your new antenna.



Considerations:

It is of extreme importance that the Coupling Short is in the middle of the marks of both the Half element and the Tube; and that the elements are always perpendicular to the body of the antenna after you have assembled it. Your antenna has been tuned to your specific frequencies and this is the way to tune it.

If you have any doubts or questions please do not hesitate to contact us at info@telenax.com